



jordan fishwick

Eccles Terrace Chinley High Peak



Eccles Terrace Chinley High Peak SK23 6BU

Guide Price £500,000



The Property

Positioned at the head of a secluded side road on the edge of the quiet countryside village of Chinley is this four-bedroom semi-detached property. The home is within walking distance of the village and its local amenities, including Chinley train station, which services the Hope Valley line between Manchester Piccadilly and Sheffield. Commanding impressive views to both front and rear aspects over Cracken Edge and Eccles Pike, this wonderful, versatile family home, simply has to be viewed. In brief, the property comprises an expansive entrance hallway which doubles as a cloakroom, a cosy living room featuring a log burner, and a modern kitchen fitted with a 'Range'-style cooker and space for a dining area. There is also a second reception room or potential ground-floor bedroom, along with a sleek and contemporary shower room. To the first floor is a four piece, period-style bathroom with a freestanding bath and three generously proportioned bedrooms. The principal bedroom enjoys scenic rural views to three aspects and benefits from a balcony positioned atop the carport. Externally, the property offers ample off-road parking and a terraced rear garden with a patio area.



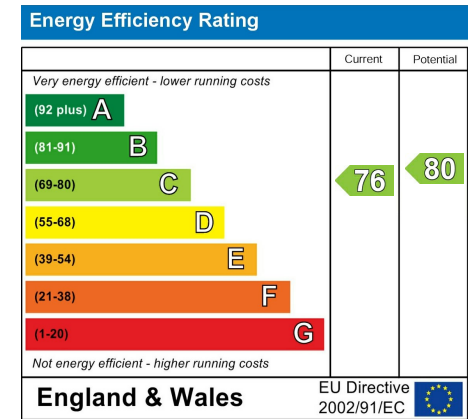
- Views Of Cracken Edge And Eccles Pike
- Principle Bedroom With Balcony
- Appealing Semi-Rural Location
- Located At The Head Of A Quiet Side Road
- Close Proximity To Chinley Train Station
- Living Room With Log Burner
- Four Generously Sized Bedrooms
- Large Driveway And Carport
- Electric Vehicle Charging Point
- Solar Panels Installed

Postcode SK23 6BU

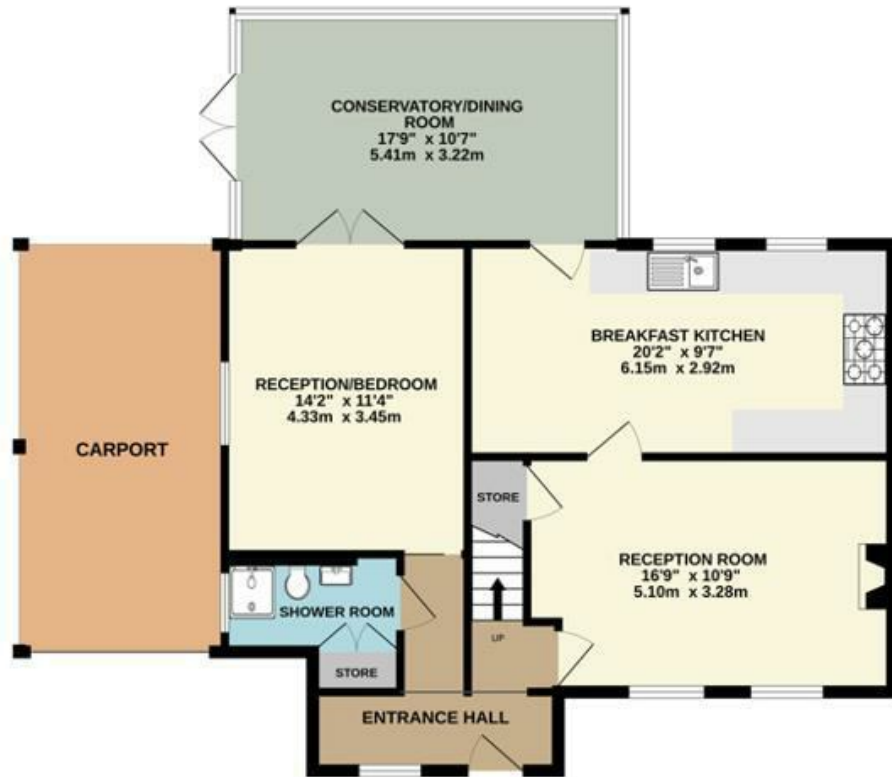
EPC Rating C

Local Authority High Peak

Council Tax B



GROUND FLOOR



1ST FLOOR



Whilst every attempt has been made to ensure the accuracy of the floorplan contained here, measurements of doors, windows, rooms and any other items are approximate and no responsibility is taken for any error, omission or mis-statement. This plan is for illustrative purposes only and should be used as such by any prospective purchaser. The services, systems and appliances shown have not been tested and no guarantee as to their operability or efficiency can be given.
Made with Metropix ©2026



These particulars are believed to be accurate but they are not guaranteed and do not form a contract. Neither Jordan Fishwick nor the vendor or lessor accept any responsibility in respect of these particulars, which are not intended to be statements or representations of fact and any intending purchaser or lessee must satisfy himself by inspection or otherwise as to the correctness of each of the statements contained in these particulars. Any floorplans on this brochure are for illustrative purposes only and are not necessarily to scale.

Offices at: Chorlton, Didsbury, Disley, Hale, Glossop, Macclesfield, Manchester Deansgate, Manchester Whitworth Street, New Mills, Sale, Wilmslow and Withington

14 Market St, Disley, Cheshire, Stockport SK12 2AA

01663 767878

disley@jordanfishwick.co.uk

www.jordanfishwick.co.uk